

waterlodge

live the alternative

A waterlife brand

# Imagine...



...making memories here



...working here



...retiring here



...unwinding here



...waking up here



...living here



...weekending here



...spending time here

## Live the alternative

01590 630 655 · [hello@mywaterlife.com](mailto:hello@mywaterlife.com) · [waterlodge.co.uk](http://waterlodge.co.uk)

# The water life



## Why

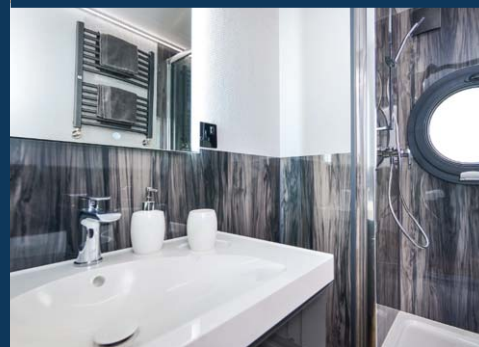
- Life on water, without compromising luxury or space
- Affordable, desirable, practical and inspirational
- Marina lifestyle, without the maintenance
- Intelligently designed, quality finished
- Bespoke designs can be tailored to your requirements
- Optimal use of space – inside and out

## What

- A range of contemporary, iconic floating homes
- Unrivalled sun decks and roof terraces
- Floor-to-ceiling panoramic windows
- Beautiful bathrooms, contemporary kitchens
- Flexible numbers of bedrooms and bathrooms
- Sleep four to eight – sizes from 9-15m long

## Where

- Anywhere there's enough water to float
- Coastal marina
- Inland marina
- River mooring
- City mooring
- Lake



Live the alternative

# Affordable, efficient, innovative



## The products

- Hand built, meeting all UK and EU regulations
- Long-lasting materials, 20-year roof guarantee
- Stability provided by twin catamaran hulls
- Choice of fitted kitchen and bathrooms
- Optional furniture pack

## Environmental benefits

- Energy efficient
- Off-grid options
- Sustainable living solution

## The savings

- No VAT
- Low maintenance costs
- Lower bills
- Potentially no council tax

## Our expertise

More than four decades of marine and boating experience have gone into developing Waterlodge houseboats that don't compromise on luxury while withstanding the particular challenges of living on water, for example using materials that prevent water ingress and are UV stable.



# Realise your dreams because...



...you dream of a weekend bolthole



...you're looking for an investment



...you want an affordable home



...you're seeking an office that inspires



...you need a weekday city apartment



...you'd love a room with a view

## Live the alternative

01590 630 655 · [hello@mywaterlife.com](mailto:hello@mywaterlife.com) · [waterlodge.co.uk](http://waterlodge.co.uk)



waterlodge

# The Oasis Range

A waterlife brand



# Waterlodge Oasis range

## Oasis 1



Length	9m	Width	3.6m
Lodge size	17m <sup>2</sup>	Lower deck area	12m <sup>2</sup>
Roof terrace area	13m <sup>2</sup>	Bedrooms	1
Bathrooms	1	Max sleeping	4

## Oasis 1 Max



Length	9.6m	Width	3.85m
Lodge size	25m <sup>2</sup>	Lower deck area	12m <sup>2</sup>
Roof terrace area	13m <sup>2</sup>	Bedrooms	1
Bathrooms	1	Max sleeping	4

## Oasis 2



Length	11m	Width	4.2m
Lodge size	27m <sup>2</sup>	Lower deck area	19m <sup>2</sup>
Roof terrace area	19m <sup>2</sup>	Bedrooms	1-2
Bathrooms	1	Max sleeping	4-6

## Oasis 3



Length	12m	Width	4.2m
Lodge size	32m <sup>2</sup>	Lower deck area	18m <sup>2</sup>
Roof terrace area	22m <sup>2</sup>	Bedrooms	1-3
Bathrooms	1	Max sleeping	6-8

## Oasis 4



Length	13.6m	Width	4.5m
Lodge size	42m <sup>2</sup>	Lower deck area	15m <sup>2</sup>
Roof terrace area	30m <sup>2</sup>	Bedrooms	2
Bathrooms	2	Max sleeping	6

## Oasis 5



Length	12m	Width	5m
Lodge size	38m <sup>2</sup>	Lower deck area	18m <sup>2</sup>
Roof terrace area	20m <sup>2</sup>	Bedrooms	1-3
Bathrooms	1	Max sleeping	6

## Oasis 6



Length	15m	Width	5m
Lodge size	50m <sup>2</sup>	Lower deck area	18m <sup>2</sup>
Roof terrace area	30m <sup>2</sup>	Bedrooms	1-4
Bathrooms	1-3	Max sleeping	10



# Waterlodge Oasis One



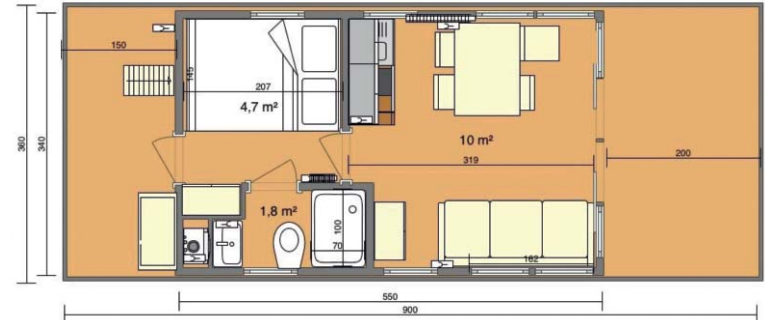
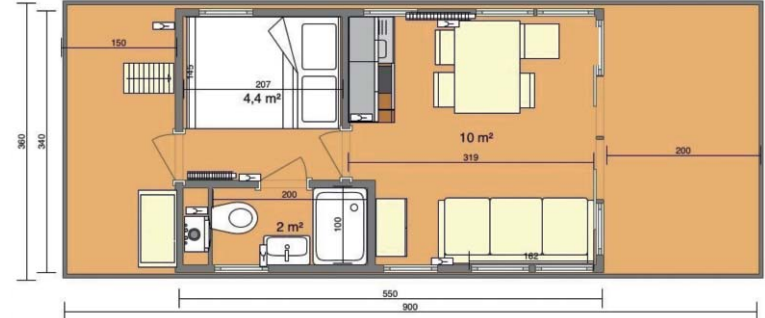
## Waterlodge Oasis One

Length 9m x width 3.6m

Waterlodge Oasis One is the ultimate studio apartment on water.

Compact and bijou, she offers 17 sq m of living space with a bedroom, storage/utility room, shower room and great entertainment space in the lounge/diner, outside deck and optional roof terrace.

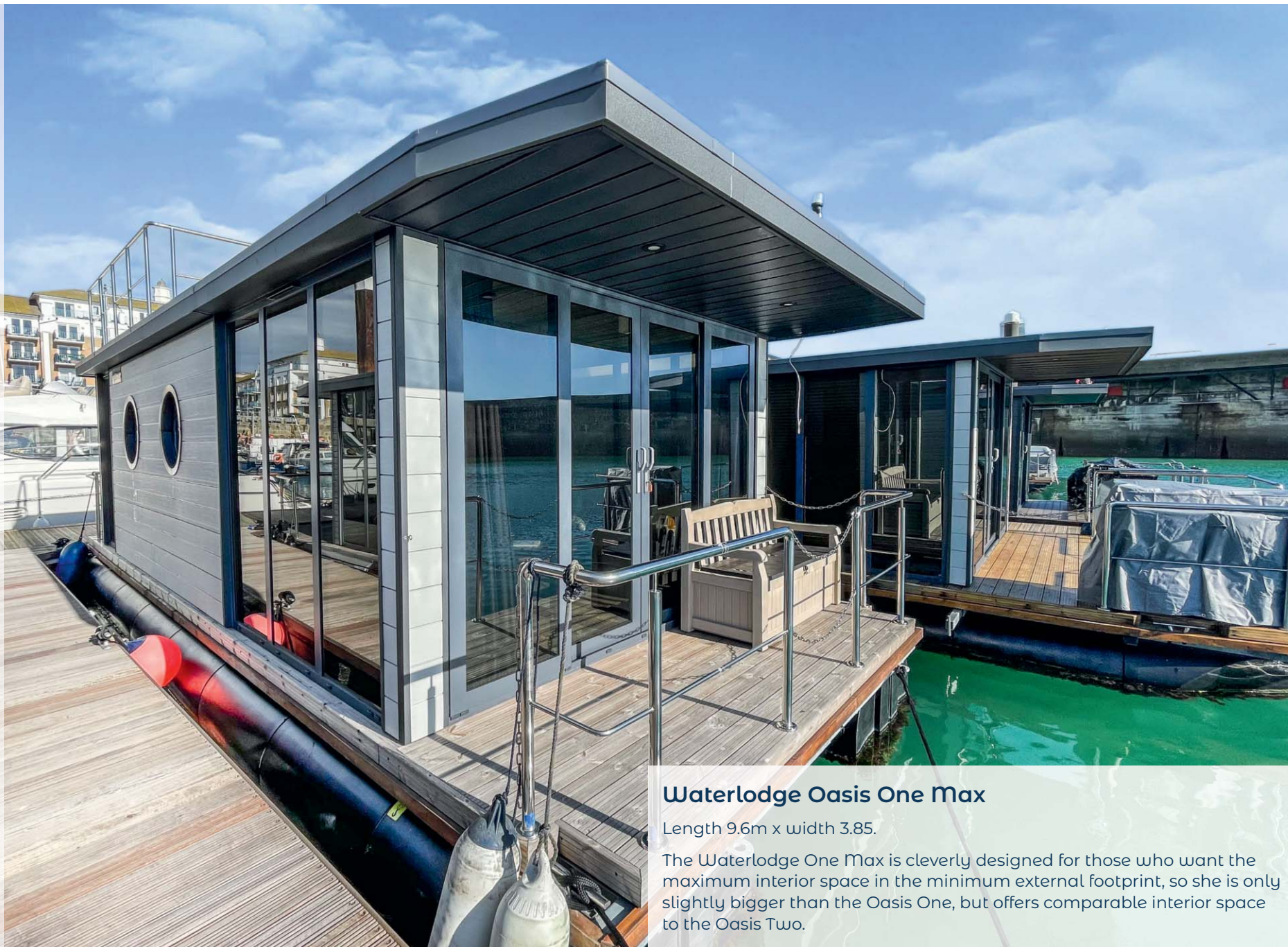
Perfect for singles and couples.



Example layouts – **please contact us to discuss alternatives.**



# Waterlodge Oasis One Max



## Waterlodge Oasis One Max

Length 9.6m x width 3.85.

The Waterlodge One Max is cleverly designed for those who want the maximum interior space in the minimum external footprint, so she is only slightly bigger than the Oasis One, but offers comparable interior space to the Oasis Two.



Example layouts – **please contact us to discuss alternatives.**



# Waterlodge Oasis Two



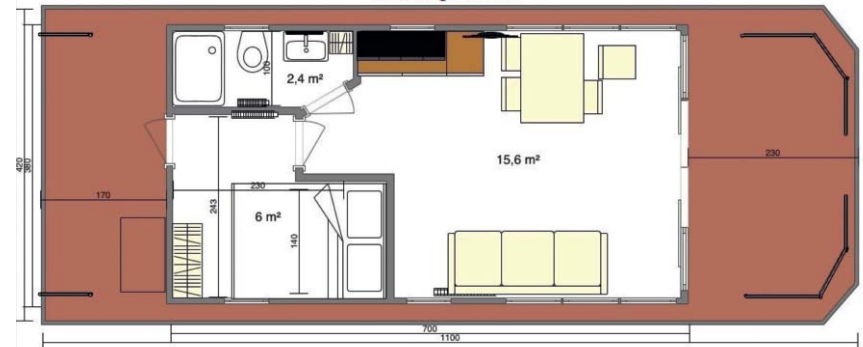
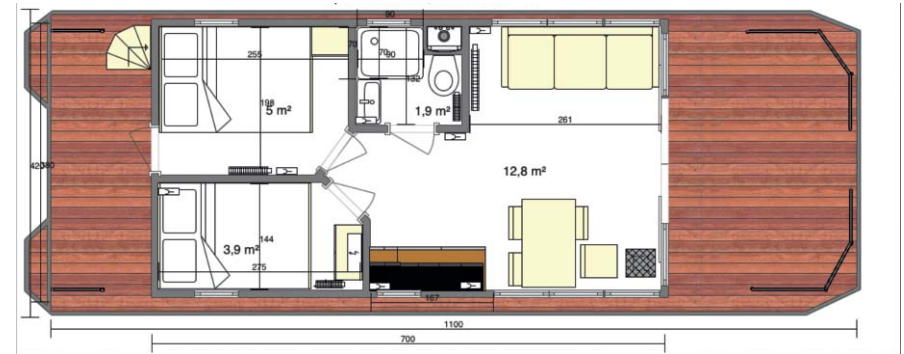
## Waterlodge Oasis Two

Length 11m x width 4.2m

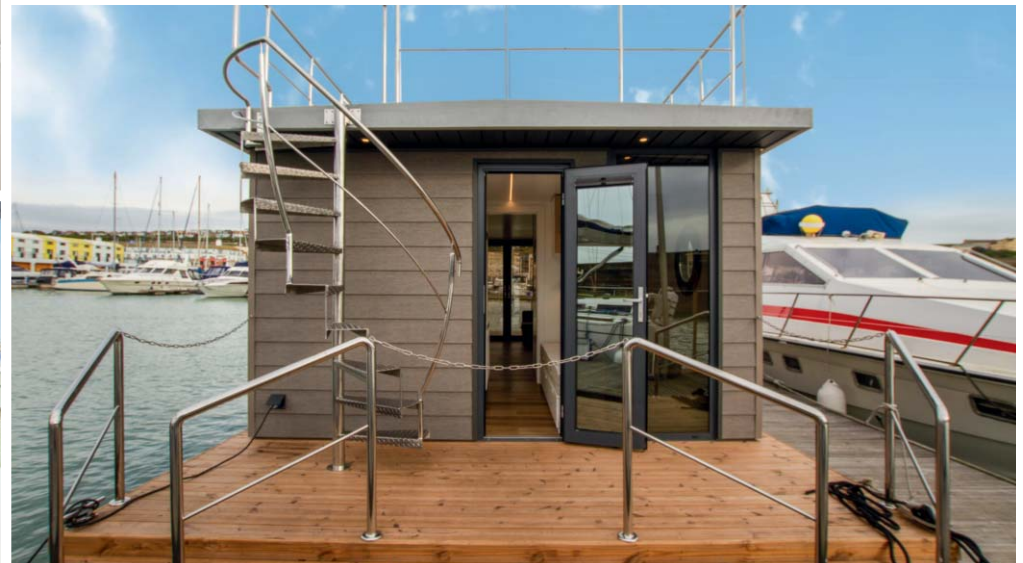
Waterlodge Oasis Two allows for a one or two bedroom layout in 27 sq m of floorspace, with up to 35 sq m of outdoor space.

The two bedroom plus sofa bed option provides accommodation for up to six guests. This makes her perfect for family use.

Or why not use the second bedroom as an office/walk-in wardrobe?



Example layouts – **please contact us to discuss alternatives.**



# Waterlodge Oasis Three

## Waterlodge Oasis Three

Length 12m x width 4.2m

Waterlodge Oasis Three brings 32 sq m of internal living space, with generous bedroom space, storage/utility room and up to 40 sq m of outdoor living and entertainment space.

Layouts for one, two or three bedrooms are available, even the option for a sauna.

Ideal for families or rental.





Example layouts – **please contact us to discuss alternatives.**



# Waterlodge Oasis Four

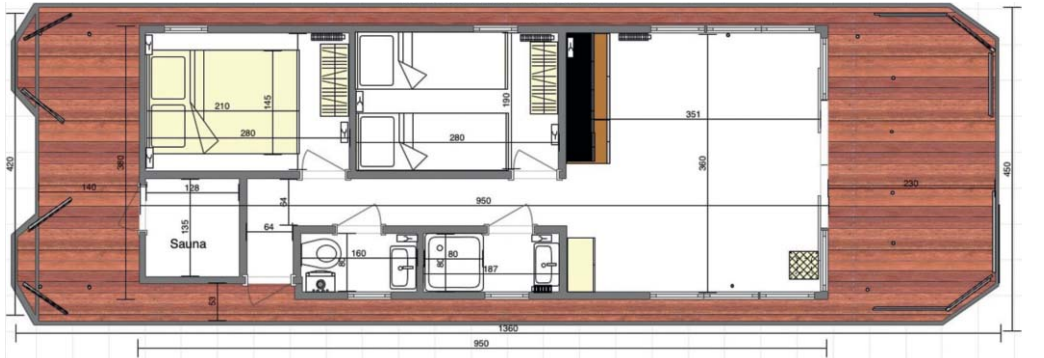
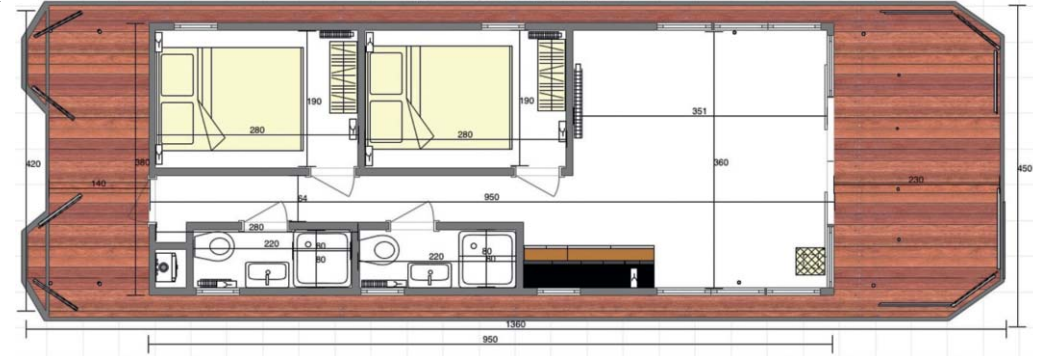


## Waterlodge Oasis Four

Length 13.6m x width 4.5m

Waterlodge Oasis Four has been specifically designed to provide two equally sized bedrooms with their own shower rooms within a longer and slimmer shape, making her easier and more economical to transport, and moor in tighter marina berths. 42 sq m of living space is complimented by up to 35 sq m of outside space.

Her layout makes her ideal for two couples purchasing or indeed for rental purposes.



Example layouts – **please contact us to discuss alternatives.**





waterlife

live the alternative

To discover more about the Waterlife Group from costs to our current inland and coastal marina locations, the team behind the group and more insights through our blogs, visit our website. Our social channels are very active and vibrant too so don't forget to follow us on your platform of choice.

We hope to hear from you soon and get you one step closer to living the alternative!



waterlifeuk



waterlife\_uk



waterlifeuk

[mywaterlife.com](http://mywaterlife.com)

